



## King's Harbour Master Portsmouth

### DIRECTION No 5/25

#### SAILGP EXCLUSION ZONE 18 - 20 JULY 2025

1. **Mariners are advised that the King's Harbour Master has made the following General Direction under the Dockyard Port of Portsmouth Order 2005** in support of the Emirates Great Britain Sail Grand Prix (SailGP) Championship in Portsmouth from Friday 18 July to Sunday 20 July 2025.
2. The event, off Southsea Castle seafront, will involve high-speed foiling catamarans racing in a designated course area. To ensure the safety of competitors, support craft, and spectators, an Exclusion Zone (EZ) will be established during scheduled racing and practice times.
3. The EZ (figure 1) is bounded by the following positions (WGS84):
  - a. 50°46.624'N 001°05.142'W
  - b. 50°46.624'N 001°04.766'W
  - c. 50°45.883'N 001°04.766'W
  - d. 50°45.483'N 001°05.716'W
  - e. 50°45.950'N 001°07.333'W
  - f. 50°46.633'N 001°06.116'W
  - g. 50°46.833'N 001°06.350'W
  - h. 50°47.049'N 001°05.946'W

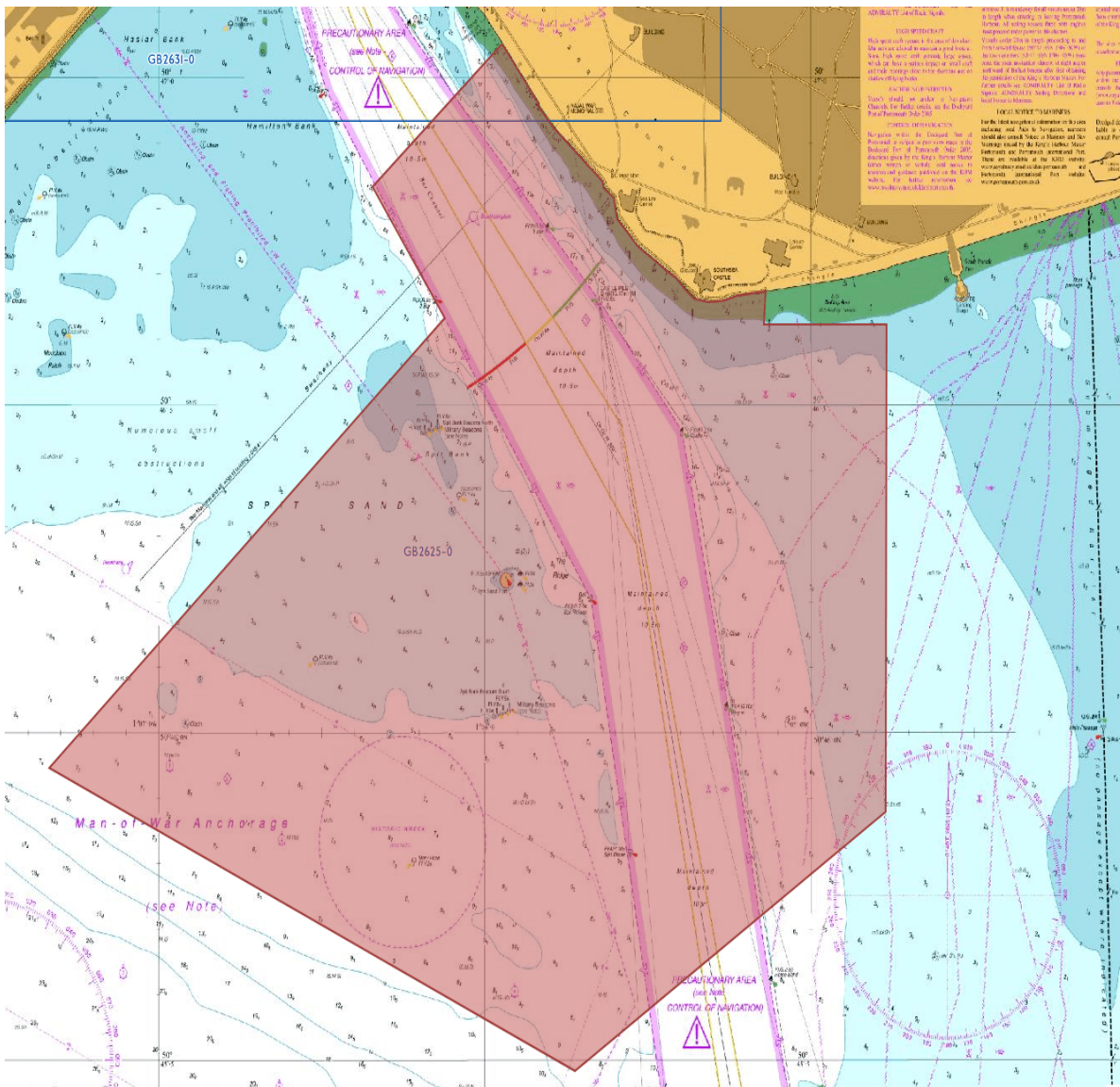


Figure 1 - SailGP Exclusion Zone

4. Times of enforcement:

- Friday 18 July: 1500 – 1800 (practice)
- Saturday 19 July: 1500 – 1800 (official racing)
- Sunday 20 July: 1500 – 1800 (official racing)

5. **Access to the EZ is strictly prohibited to all unauthorised vessels and persons,** including: recreational craft, personal watercraft (e.g. jet skis) swimmers, kayaks, paddleboards, and other non-powered vessels. Authorised vessels are only those vessels displaying an official SailGP event flag.

6. An announcement will be made by Portsmouth VTS on VHF channel 11 to advise mariners that the EZ is in-force.

7. Prior to race start, several large vessels from/to Portsmouth International Port and Wightlink terminals are permitted to transit the EZ as scheduled. These movements will be directed by Portsmouth VTS and deconflicted with SailGP traffic within the EZ.

8. The zone will be marked by large orange inflatable buoys and patrolled by official SailGP

marshals, the King's Harbour Master and Police enforcement vessels.

9. Persons are to obey instructions from official event marshals and enforcement personnel at all times. **Failure to comply may result in enforcement action under the Dockyard Port of Portsmouth Order 2005.**

10. For the duration of the event, official SailGP vessels are permitted to exceed the Dockyard Port of Portsmouth speed limit as stated within General Direction 4/25 within the EZ only, provided the action is necessary and proportionate to the operation of the event.

11. Mariners are reminded that no amendments have been made to other rules, regulations or directions.

12. Cancel this General Direction on 21 July 2025.

Tuesday 24 Jun 2025

G W BISHOP  
King's Harbour Master

Owners, Agents, Charterers, Marinas, Yacht Clubs and Recreational Sailing Organisations should ensure that the contents of this Notice are made known to the masters or persons in charge of their vessels or craft.